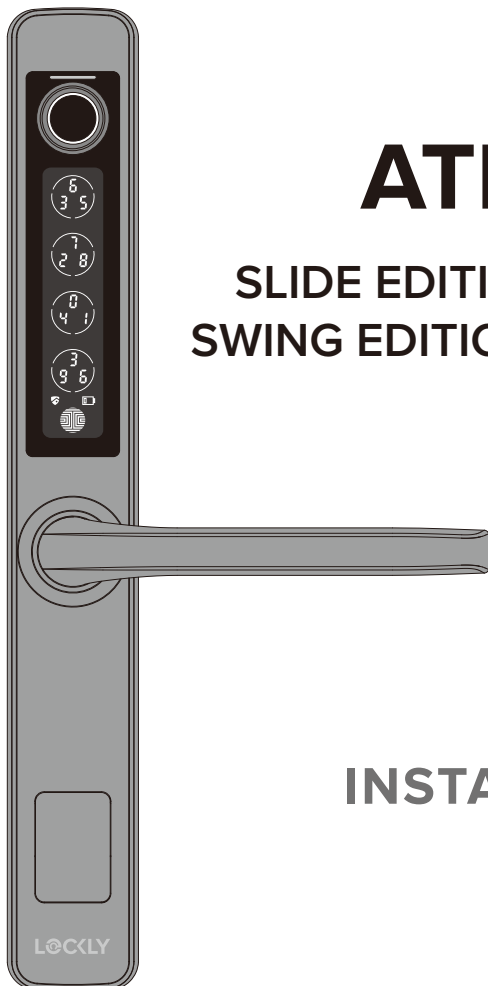




WWW.LOCKLYPRO.COM  
PGD228WSL/PGD228WSW

FOR COMMERCIAL USE & PROFESSIONAL INSTALLATION



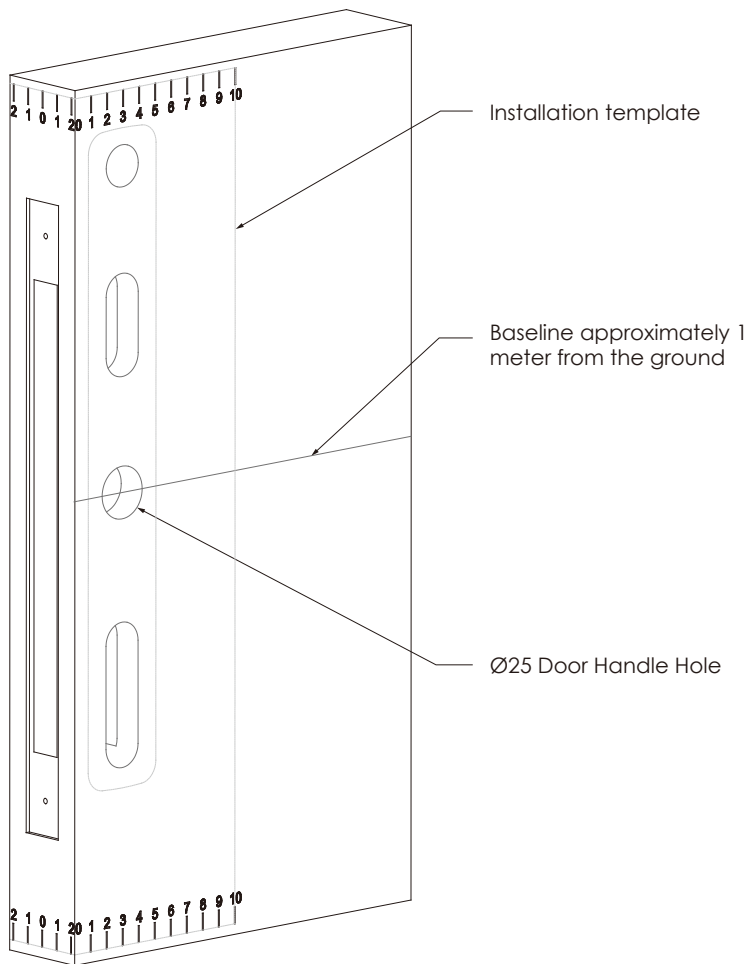
# ATHENA

SLIDE EDITION (228SL)  
SWING EDITION (228SW)

INSTALLATION  
GUIDE

# Preparation

Prepare door: remove existing deadbolt or use provided template to bore new holes.

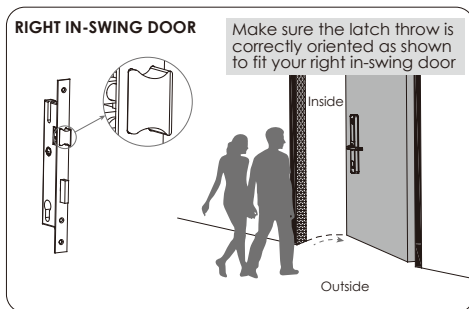
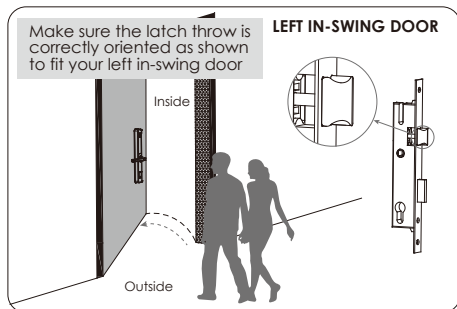
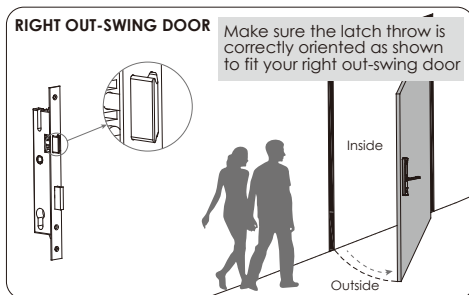
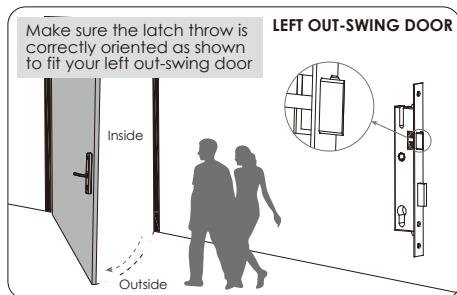


# Step 1

## DETERMINE DOOR OPENING DIRECTION

There are 4 common door-opening directions, the lockset configuration as shown on each diagram below corresponds to the respective door-opening direction.

**NOTE:** If you're installing a Slide Edition, skip these steps and proceed to **Step 3**



### IMPORTANT

This lock is designed for 35-65mm Wooden or Aluminium Door or Aluminium Thermal Barrier Door. If your door is outside the range of the list above please contact our Customer hotline: (855) 562-5599

Before installing the key cylinder and spindle, make sure you have already adjusted your Latch throw (Step 2) and door handle (Step 3) according to door opening direction.

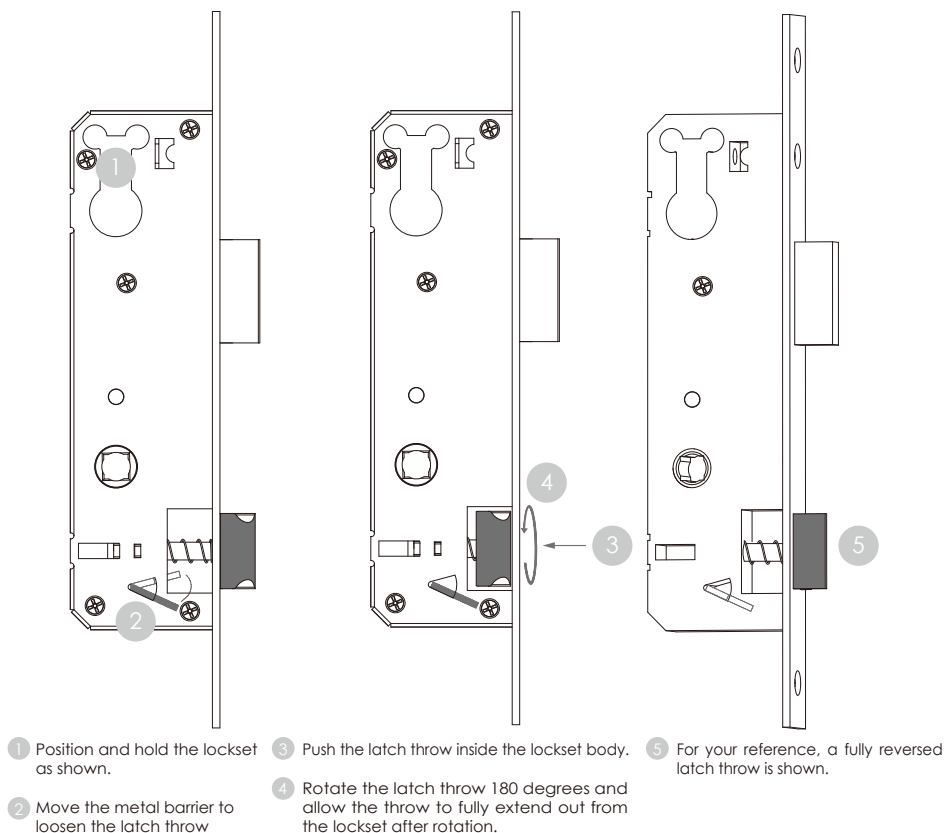
## Step 2

## ADJUSTING THE LATCH THROW

Follow the below steps if you're installing ATHENA SWING EDITION with Mortise lockset model/backset size: **PGMB118 1-1/8" (28mm)**, **PGMB138 1-3/8" (35mm)**, **PGMB158 1- 5/8" (40mm)**, **PGMB134 1-3/4" (45mm)**, **PGMB238 2-3/8" (60mm)**.

Lockset ships default for RIGHT IN-SWING or LEFT OUT-SWING DOORS. Skip this procedure if your door orientation is as stated. See Step 1 to determine your door opening direction.

Follow the step by step direction to adjust the lockset for LEFT IN-SWING or RIGHT OUT-SWING DOORS.



**NOTE:** If you're installing a Slide Edition skip this step and proceed to **Step 3**.

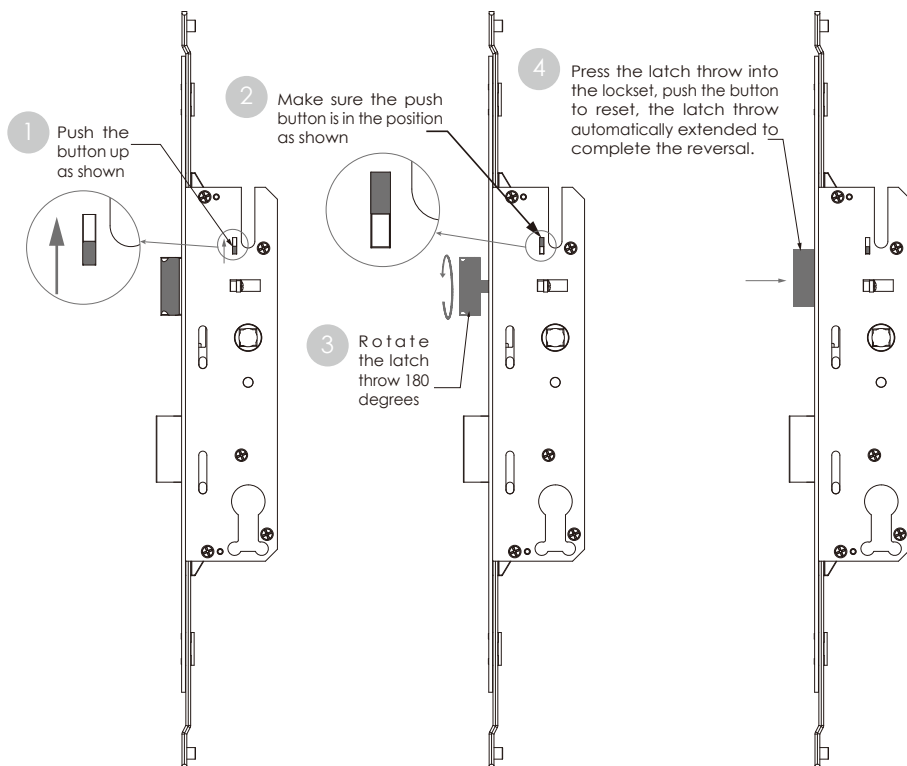
If you're installing a Multi-Point Lockset for a Swing Edition, see next page to adjust the latch throw.

For ATHENA SWING EDITION with Multi-point lockset model/backset size:

**PGMB138H 1-3/8" (35mm), PGMB158H 1-5/8" (40mm), PGMB134H 1-3/4" (45mm).**

Default setting for these lockset models is for RIGHT IN-SWING or LEFT OUT-SWING DOORS. Skip this procedure if your door orientation is as stated. See Step 1 to determine your door direction.

Follow the step by step direction to adjust the lockset for LEFT IN-SWING or RIGHT OUT-SWING DOORS.

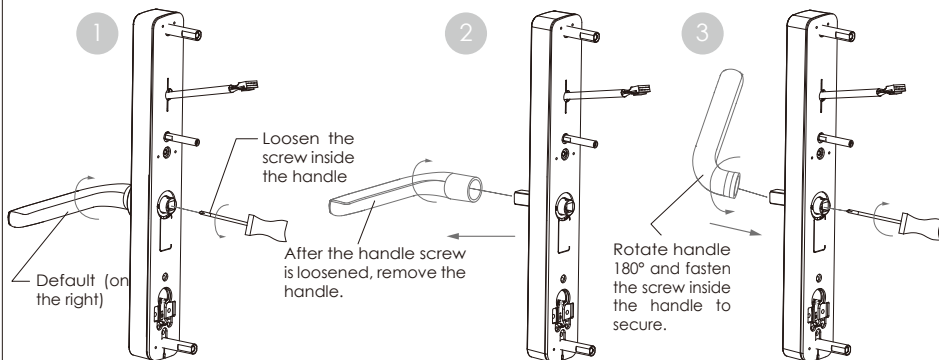


# Step 3

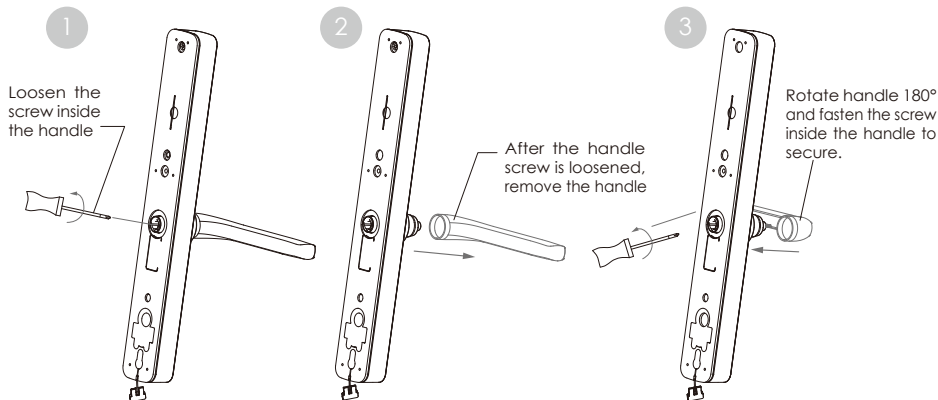
## CHANGING HANDLE FOR RIGHT OR LEFT SWING DOORS

The diagram below shows how to shift the door handle from right to left direction. The default setting of the handle is for right handed door. You do not need to change direction if you have a right handed door.

### Change the handle direction of the Exterior Assembly



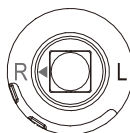
### Change the handle direction of the Interior Assembly



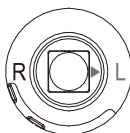
#### IMPORTANT

Ensure the handle is correctly positioned according to desired direction (L/R)

For Right swing door align handle to "R"



For Left swing door align handle to "L"

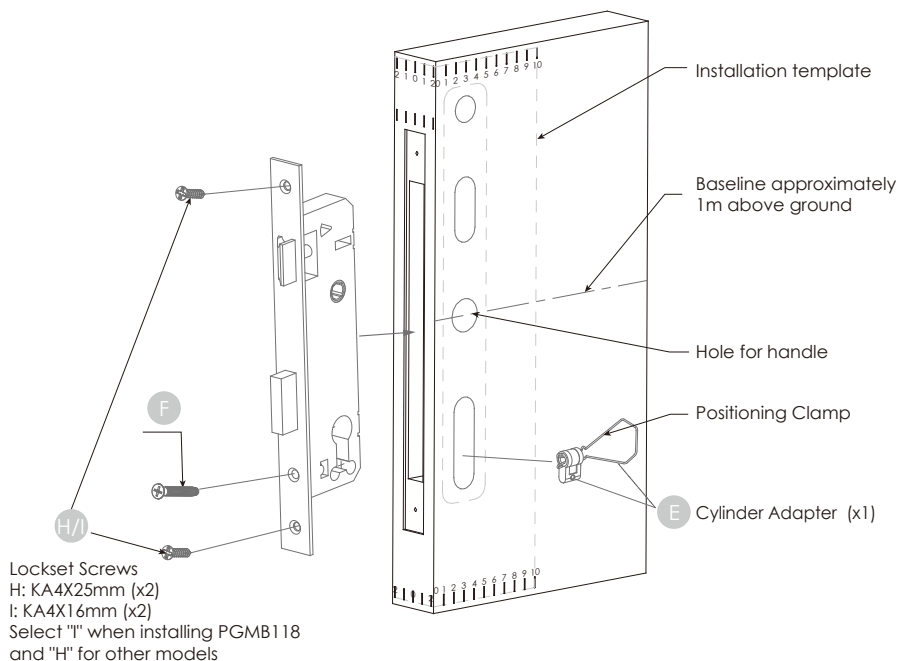


# Step 4

## INSTALLING THE LOCKSET

Make sure your door is prepared for installation. If you need to drill new holes, please use the supplied template for drilling holes. Before installing the Lockset (S), confirm the door opening direction (Step 1) and ensure latch throw inclined part is positioned opposite to the opening direction.

Insert Lockset onto door hole and secure with screws (H) (top and bottom) & (F).



### Adapter Positioning Screw (F) (x1)

#### KM5x35mm

PGMB118 1-1/8" (28mm)  
PGMG118 1-1/8" (30mm)  
PGMG118H 1-1/8" (30mm)

#### KM5x40mm

PGMB138 1-3/8" (35mm)  
PGMB138H 1-3/8" (35mm)  
PGMG138 1-3/8" (35mm)  
PGMG138H 1-3/8" (35mm)

#### KM5x45mm

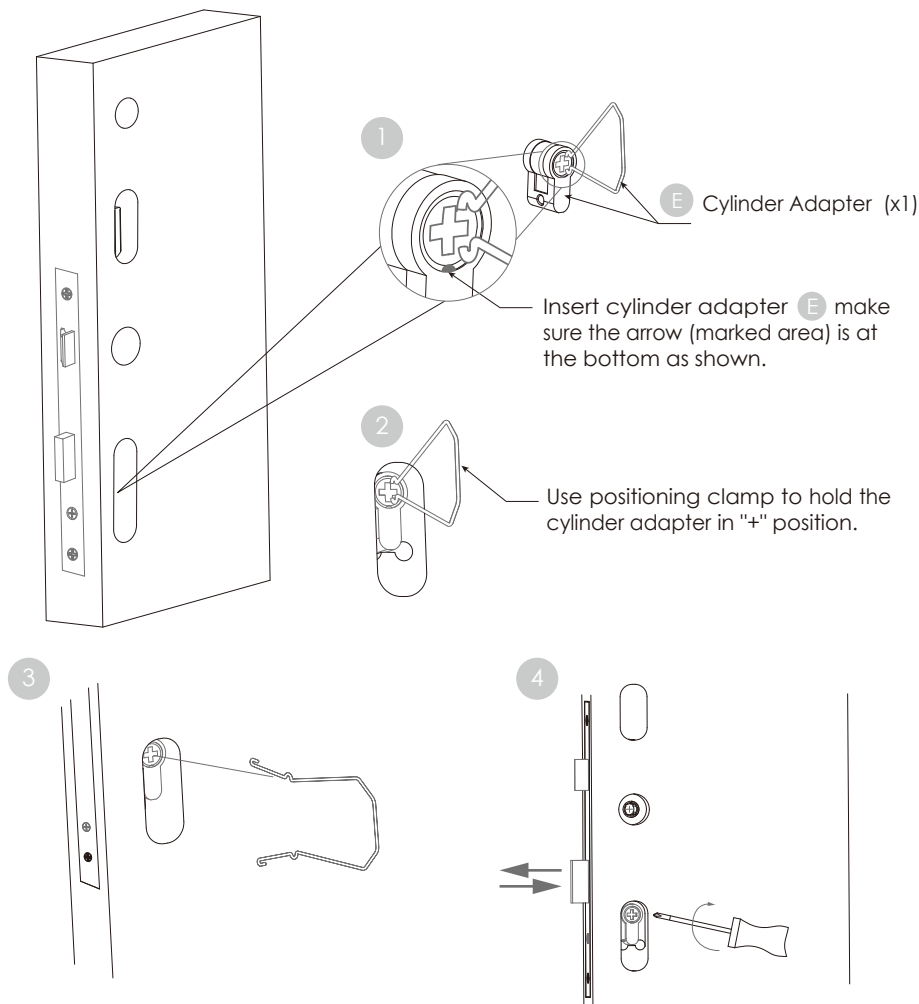
PGMB158 1-5/8" (40mm)  
PGMB158H 1-5/8" (40mm)

#### KM5x50mm

PGMB134 1-3/4" (45mm)  
PGMB134H 1-3/4" (45mm)

#### KM5x65mm

PGMB238 2-3/8" (60mm)



Once cylinder adapter is secured, remove positioning clamp by pressing on both sides.

To check if the cylinder adapter is properly installed, insert a phillips screwdriver. Turn clockwise and counter clockwise to check if the deadbolt and latch throw fully extend and retract. You may need to adjust the position of the adapter if the deadbolt and latch throw are not fully extending and retracting.



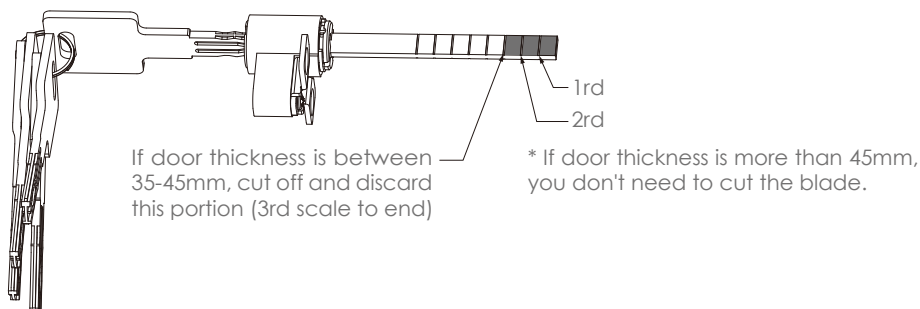
# Step 5

## ATTACHING EXTERIOR ASSEMBLY INSTALLATION PARTS

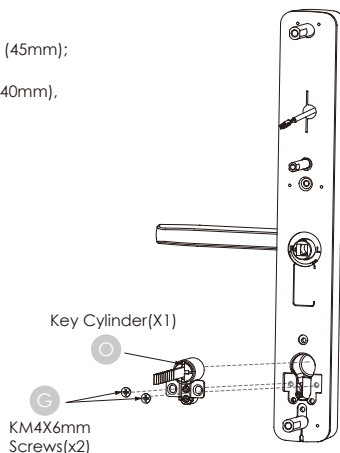
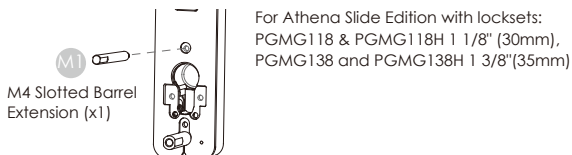
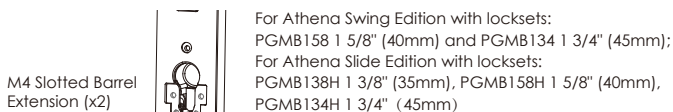
Before installing the key cylinder, make sure your door handle have been adjusted to your door opening direction, see **Step 2**.

### Install Key Cylinder

1. Measure door thickness and cut off the key cylinder blade (if necessary).

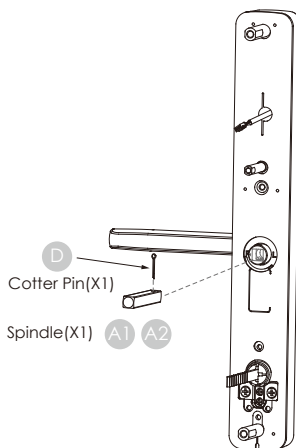
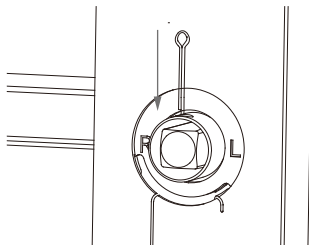


2. Insert key cylinder to exterior panel.
3. Secure the cylinder with screws (x2) on both sides.
4. Insert M4 slotted barrel extension according to lockset dimension.



### Install Spindle **A**

1. Select spindle A1/A2 according to door thickness.  
A1 Door Thickness 35-50mm: Spindle 62mm (x1)  
A2 Door Thickness 51-65mm: Spindle 77mm (x1)
2. Install at the center hole of the exterior assembly.
3. Insert cotter pin and bend both ends.



The illustration on the right applies for lockset : PGMB238 2 3/8" (60mm), Athena Swing Edition.

**M2** + **M4** Accessories for 35-55mm Door Thickness

**M3** + **M4** Accessories for 56-80mm Door Thickness

\* Other door thickness accessories need to be customized

M4 Slotted Barrel Extension(X1)

**M4**

Cotter Pin(X1)

**D**

Spindle(X1)

**A**

Lock Cylinder(X1)

**O**

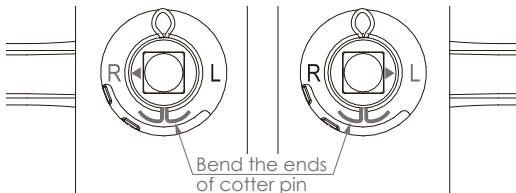
KM4X6mm Screws(x2)

**G**

**IMPORTANT:** Ensure the handle is correctly positioned according to desired direction (L/R) before bending the ends of the cotter pin.

For Right swing door  
align handle to "R"

For Left swing door  
align handle to "L"



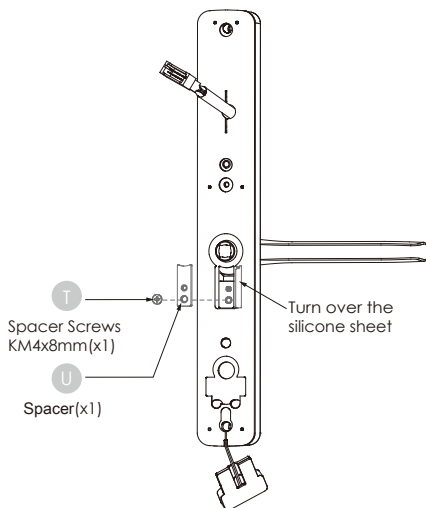


### IMPORTANT:

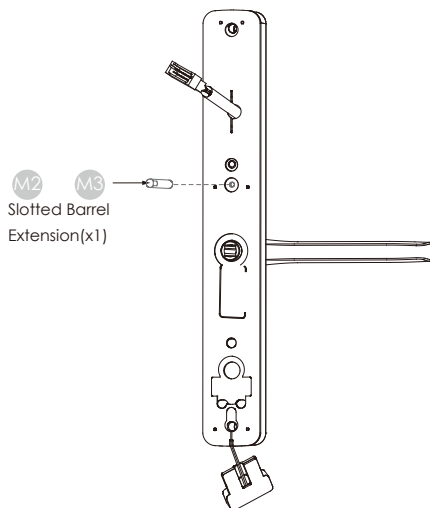
The steps below will only apply for Swing Edition locksets. If you are installing Slide Edition locksets, please skip these steps and proceed to Step 6 to install the exterior and interior assemblies.

Before installing the key cylinder, make sure your door handle have been adjusted to your door opening direction, see Step 2.

The illustration below applies for All Athena Swing Edition lockset : PGMB118 1 1/8" (28mm), PGMB138 1 3/8" (35mm), PGMB158 1 5/8" (40mm), PGMB134 1 3/4" (45mm).



The illustration below applies for lockset : PGMB238 2 3/8" (60mm), Athena Swing Edition



M2 Accessories for 35-55mm Door Thickness

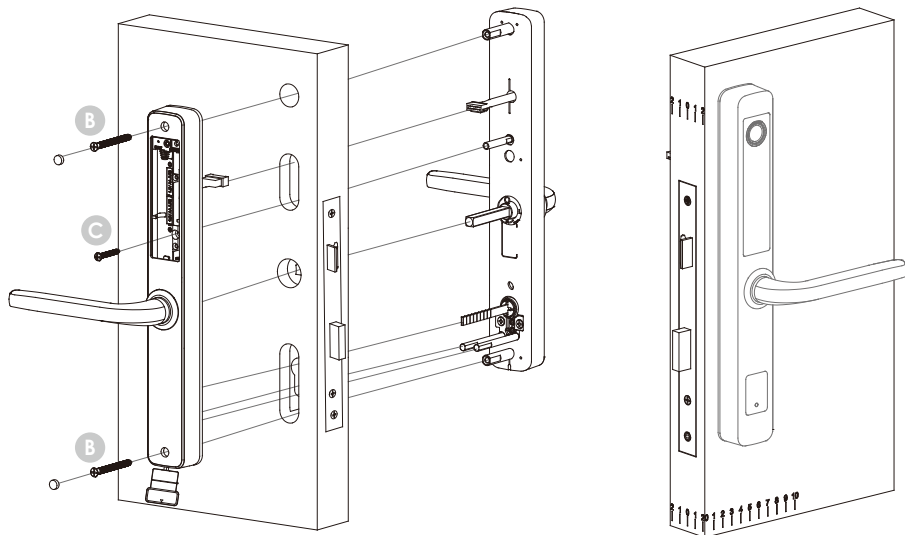
M3 Accessories for 56-80mm Door Thickness

Note: When installing PGMB238 2 3/8" (60mm) lockset, assemble M2 or M3 screw with the interior panel.

## Step 6

### INSTALLING THE EXTERIOR AND INTERIOR ASSEMBLY

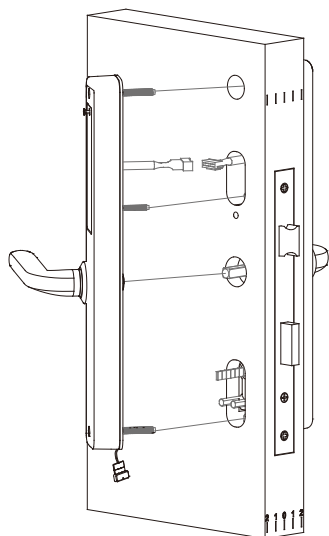
Install the exterior assembly onto door. Ensure the spindle, lock cylinder, positioning rods and cable are inserted on the correct holes and passed through the lockset.



Plug the connection cable of the exterior assembly to cable of the interior assembly. Once connected, insert cable to the door frame holes.

Install the interior assembly and secure with screws **(B)** and **(C)**

Ensure the cables are completely flush flat on the door surface. Use screw caps N to cover B screws.



#### Escutcheon Screw (x2) **(B)**

Door Thickness 35-50mm: KM5x46mm

Door Thickness 51-65mm: KM5x61mm

Door Thickness 66-80mm: KM5x76mm

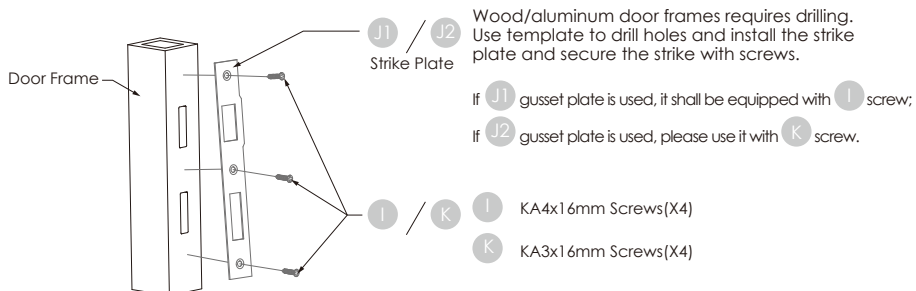
#### Escutcheon Screw(x1) **(C)**

Door Thickness 35-50mm: PM4x28mm

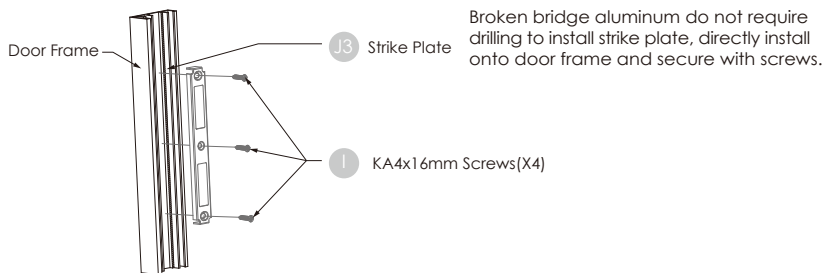
Door Thickness 51-65mm: PM4x43mm

Door Thickness 66-80mm: PM4x58mm

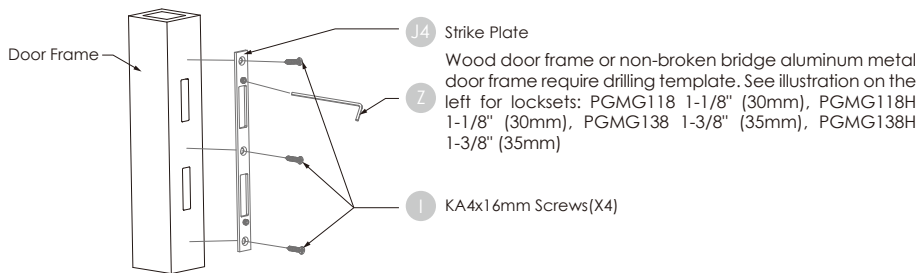
### Wood/Aluminum door frames (For Swing Edition locksets)



### Broken bridge aluminum (For Swing Edition locksets)



### Wood/Aluminum door frames (For Slide Edition locksets)



Allen wrench 2.5mm (x1)

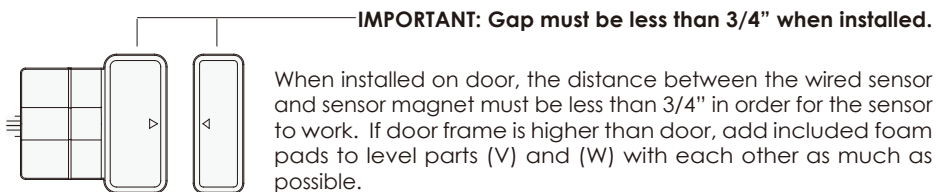
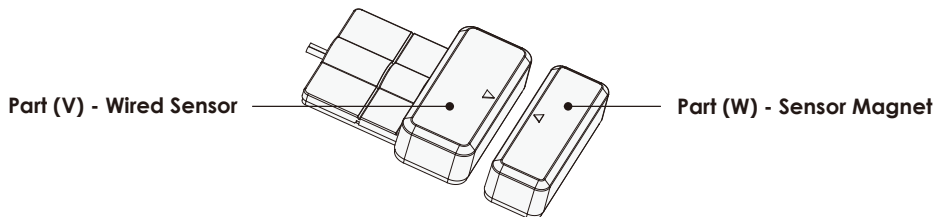
When the strike plate is fixed on the door frame, the 2 screws should be adjusted to the inner side of the unlocking hook about 1-2mm. After the screws are locked, the surface of the exposed screws should not be lower than the surface of the strike plate.

While you are inside the house, try to close and open the door. Check if the deadbolt and latchbolt fits the door frame holes and the door closes properly.

### About door sensors

Door sensors provide real-time door condition status, such as the ability to verify if the door is securely closed. It sends push notifications to your phone whenever your door opens.

Lockly Guard Athena comes with a pre-wired door sensors consisting of two parts:



Lockly Guard door sensors comes in Grey (PGA715) and Matte Black (PGA716)

**TIP:** that can be ordered through our customer hotline: +1 (855) 562-5599 or by email: [prosales@lockly.com](mailto:prosales@lockly.com).

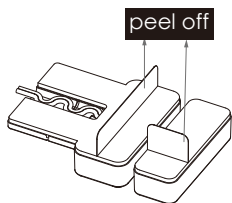
### Removal of Sensor (optional)

There may be circumstances where the sensor cannot be installed because of molding/door limitations or is not aesthetically desirable. The sensor wired to the lock is removable by carefully pulling its connector from the circuit board. **If removed, some features and functionality will not be available, such as real-time condition status.**

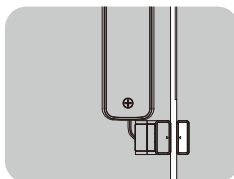
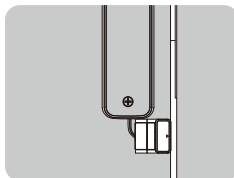
Make sure you install the Door Sensor indoors on a clean and dry surface. Gently wipe the surface of your door and door frame where you wish to install the Door Sensor and make sure it's dry before installing.

Keep the Door Sensor away from direct sunlight, high heat locations and large metal objects that may interfere with wireless signals.

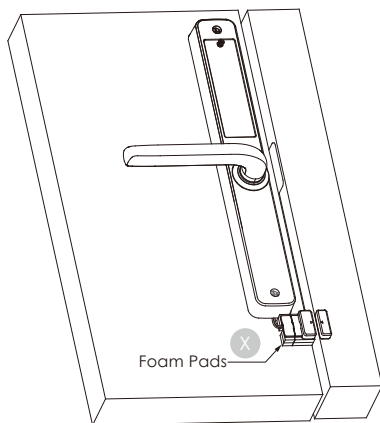
1. Peel the paper layer off the adhesives from the back of the wired sensor.



2. Position the wired sensor to the edge of the door, avoiding the door strike plate. Attach and secure with the adhesives.



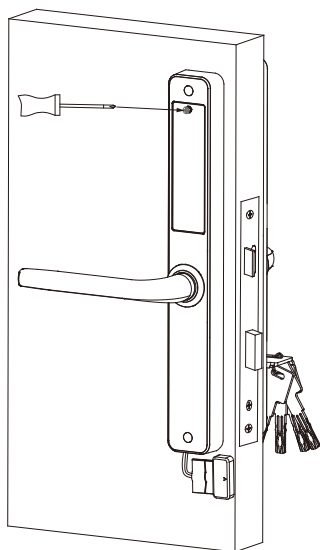
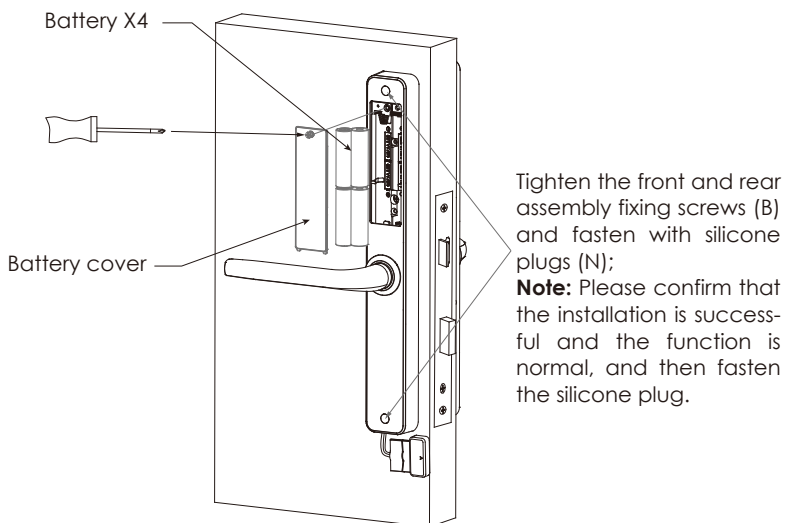
3. Close the door. Before you peel the paper layer off the adhesives from the sensor magnet, align the arrow with the wired sensor. Install on to door frame.



### IMPORTANT:

The arrows must be aligned or as closed as possible (less than 3/4"). If needed, adjust the position of the sensor magnet using provided foam pads to ensure the sensor blinks when door opens or closes.

1. Open the battery compartment and insert 4 AA batteries. Make sure the batteries are correctly positioned.



2. Check the lock functions according to user manual after installing the batteries. Use the battery cover to secure the battery compartment and fasten with screw.



Congratulations! You have completed the Lockly Guard physical lock installation. To complete your setup, download the LocklyPro app from the iOS or Google Play app Store and follow on-screen instructions.

**Scan or visit  
[Locklypro.com/app](https://locklypro.com/app)**



**FCC Warning:**

This device complies with Part 15 of the FCC Rules. Operation is subject to the following two conditions: (1) This device may not cause harmful interference, and (2) this device must accept any interference received, including interference that may cause undesired operation.

**NOTE 1:** This equipment has been tested and found to comply with the limits for a Class B digital device, pursuant to part 15 of the FCC Rules. These limits are designed to provide reasonable protection against harmful interference in a residential installation. This equipment generates, uses and can radiate radio frequency energy and, if not installed and used in accordance with the instructions, may cause harmful interference to radio communications. However, there is no guarantee that interference will not occur in a particular installation. If this equipment does cause harmful interference to radio or television reception, which can be determined by turning the equipment off and on, the user is encouraged to try to correct the interference by one or more of the following measures:

- Reorient or relocate the receiving antenna.
- Increase the separation between the equipment and receiver.
- Connect the equipment into an outlet on a circuit different from that to which the receiver is connected.
- Consult the dealer or an experienced radio/TV technician for help.

**NOTE 2:** Any changes or modifications to this unit not expressly approved by the party responsible for compliance could void the user's authority to operate the equipment.

**FCC Radiation Exposure Statement**

This equipment complies with FCC radiation exposure limits set forth for an uncontrolled environment. It should be installed and operated with minimum distance 20cm between the radiator & your body.

**IC WARNING**

This device contains licence-exempt transmitter(s) that comply with Innovation, Science and Economic Development Canada's licence-exempt RSS(s). Operation is subject to the following two conditions:

- (1) This device may not cause interference.
- (2) This device must accept any interference, including interference that may cause undesired operation of the device.

L'émetteur/récepteur exempt de licence contenu dans le présent appareil est conforme aux CNR d'Innovation, Sciences et Développement économique Canada applicables aux appareils radio exempts de licence. L'exploitation est autorisée aux deux conditions suivantes:

1. L'appareil ne doit pas produire de brouillage;
2. L'appareil doit accepter tout brouillage radioélectrique subi, même si le brouillage est susceptible d'en compromettre le fonctionnement.

**IC Radiation Exposure Statement**

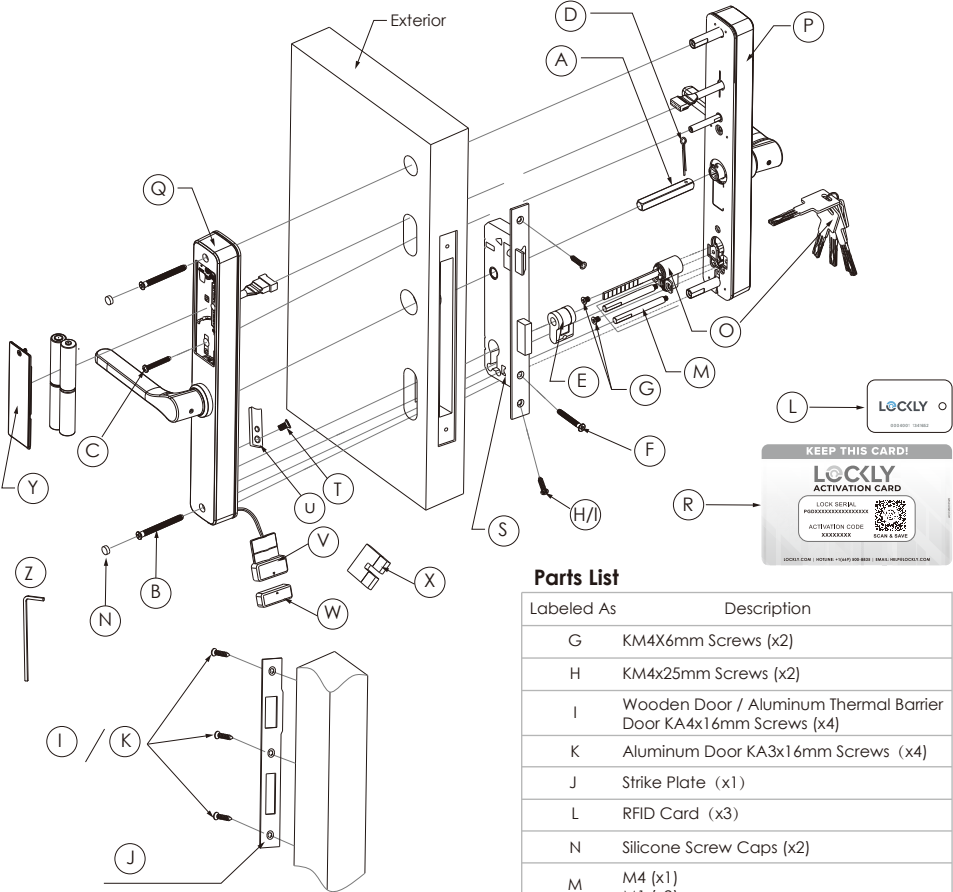
This equipment meets the exemption from the routine evaluation limits in section 2.5 of RSS-102. It should be installed and operated with a minimum distance of 20cm between the radiator and any part of your body.

Cet équipement est conforme à l'exemption des limites d'évaluation habituelle de la section 2.5 de la norme RSS-102. Il doit être installé et utilisé à une distance minimale de 20 cm entre le radiateur et toute partie de votre corps



**WARNING:** This product can expose you to chemicals including Lead, which is known to the State of California to cause cancer. For more information go to [www.P65Warnings.ca.gov](http://www.P65Warnings.ca.gov).

# INSTALLATION OVERVIEW AND PARTS LIST



## Parts List









Labeled As	Description
A	Spindle (x1) A1 Door Thickness 35-50mm: Spindle 62mm (x1) A2 Door Thickness 51-65mm: Spindle 77mm (x1)
B	Escutcheon Screw (x2) Door Thickness 35-50mm: KM5x46mm Door Thickness 51-65mm: KM5x61mm Door Thickness 66-80mm: KM5x76mm
C	Escutcheon Screw (x1) Door Thickness 35-50mm: PM4x28mm Door Thickness 51-65mm: PM4x43mm Door Thickness 66-80mm: PM4x58mm
D	Cotter Pin (X1)
E	Cylinder Adapter & Clamp (x1)
F	Adapter Positioning Screw (x1)

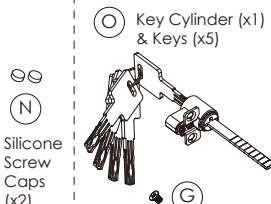
## Parts List

Labeled As	Description
G	KM4X6mm Screws (x2)
H	KM4x25mm Screws (x2)
I	Wooden Door / Aluminum Thermal Barrier Door KA4x16mm Screws (x4)
K	Aluminum Door KA3x16mm Screws (x4)
J	Strike Plate (x1)
L	RFID Card (x3)
N	Silicone Screw Caps (x2)
M	M4 (x1) M1 (x2)
O	Key Cylinder (x1) + Keys (x5)
P	Exterior Assembly
Q	Interior Assembly
R	Activation Card
S	Mortise Lockset
T	KM4X8mm Screws (x1)
U	Spacer (x1)
V	Wired Sensor
W	Sensor Magnet
X	Foam Pads
Y	Battery cover
Z	Strike Plate (x1)

# INSTALLATION OVERVIEW AND PARTS LIST

Can be used for either Slide or Swing Edition (part included as per door thickness specification (A or B))

<b>(A) For 35-50mm Door Thickness</b>			
 <b>(A1)</b> 62mm Spindle (x1)	 <b>(C1)</b> PM4x28mm (x1) Escutcheon Screw	 <b>(B1)</b> KM5x46mm (x2) Escutcheon Screw	 <b>(D)</b> Cotter Pin (x1)
<b>(B) For 50-65mm Door Thickness</b>			
 <b>(A2)</b> 77mm Spindle (x1)	 <b>(C2)</b> PM4x43mm (x1) Escutcheon Screw	 <b>(B2)</b> KM5x61mm (x2) Escutcheon Screw	 <b>(D)</b> Cotter Pin (x1)



Included part as per Mortise Lockset specification

(E) Cylinder Adapter & Clamp (x1)

(F) Adapter Positioning Screw (x1)

KM5x35mm:

PGMB118 1 1/8" (28mm)

PGMG118 1 1/8" (30mm)

PGMG118H 1 1/8" (30mm)

KM5x40mm

PGMB138 1 3/8" (35mm)

PGMB138H 1 3/8" (35mm)

PGMG138 1 3/8" (35mm)

PGMG138H 1 3/8" (35mm)

KM5x45mm

PGMB158 1 5/8" (40mm)

PGMB158H 1 5/8" (40mm)

KM5x50mm

PGMB134 1 3/4" (45mm)

PGMB134H 1 3/4" (45mm)

KM5x65mm

PGMB238 2 3/8" (60mm)

(M1) Slotted Barrel Extension (x2)

(M1)

for 35-80mm door thickness

(M1)

(x1) for PGD228WSWSS-28, PGD228WSLSS-35,

(M1)

(x2) for PGD228WSLSS-35, PGD228WSWSS-40

For PGMB238 2 3/8" (60mm) Lock Body

(M2)

Slotted Barrel  
Extension  
30mm(x1)

(M3)

Slotted Barrel  
Extension  
55mm(x1)

(M4)

Slotted Barrel  
Extension  
32mm(x1)

(M2)

(M4)

for 35-55mm door thickness

(M3)

(M4)

for 56-80mm door thickness

Suitable for Swing Edition














(U) Spacer(x1)

(T) KM4X8mm Screw(X1)

**NOTE:** You may customize slotted barrel configuration according to door thickness

# INSTALLATION OVERVIEW AND PARTS LIST

Parts individually packed and included according to door specifications

Swing Edition Door Strike Kit				Slide Edition Door Strike Kit	
Wooden Door Frame Strike Plate Kit		Aluminum Door Frame Strike Plate Kit		Aluminum Thermal Barrier Door Strike Plate Kit	
					
KA4x25mm Screws (x3)		KA4x25mm Screws (x3)		KA4x25mm Screws (x3)	
					
KA4x16mm Screws (x4)	Strike Plate (x1)	KA3x16mm Screws (x4)	Strike Plate (x1)	KA4x16mm Screws (x4)	Strike Plate (x1)
When PGMB118 is selected, there is no "H" in the accessory package					
				Slide Edition Door Strike Kit	
					
				KA4X25mm Screws(X3)	
					
				KA4X16mm Screws (x4)	Door Frame snap (x1)



FOR COMMERCIAL USE & PROFESSIONAL INSTALLATION



We're here to help!  
[prosales@lockly.com](mailto:prosales@lockly.com)  
[locklypro.com/support](https://locklypro.com/support)

© Copyright 2022 Lockly All rights reserved

USA Patent No. US 9,881,146 B2 | USA Patent No. US 9,853,815 B2 | USA Patent No. US 9,875,350 B2 | USA Patent No. US 9,665,706 B2 | USA Patent No. US 11,010,463 B2 | AUS Patent No. 2013403169 | AUS Patent No. 2014391959 | AUS Patent No. 2016412123 | UK Patent No. EP3059689B1 | UK Patent No. EP3176722B1 | Other Patents Pending

MPGD228W20220815