



FOR COMMERCIAL USE & PROFESSIONAL INSTALLATION

INGRESS VISION (303)

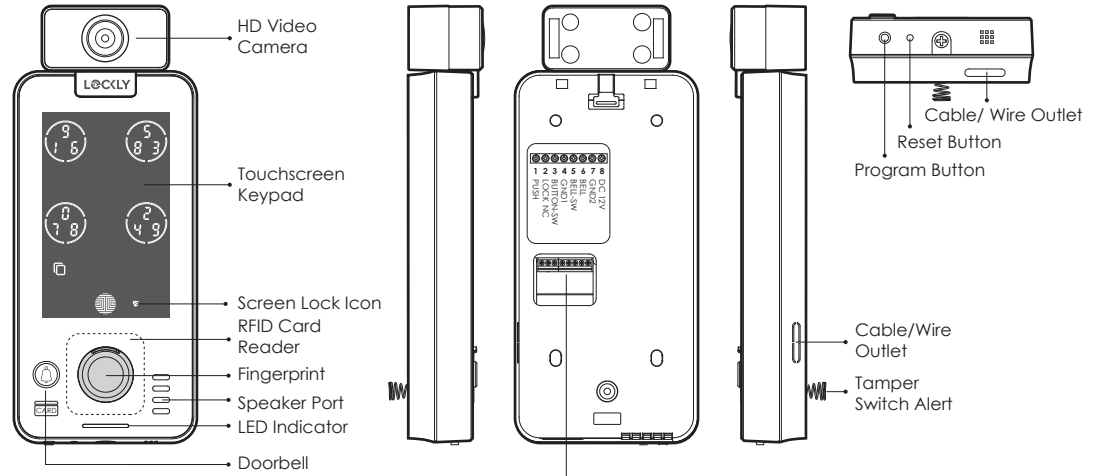



INSTALLATION GUIDE

SMART ACCESS CONTROL + VIDEO DOORBELL

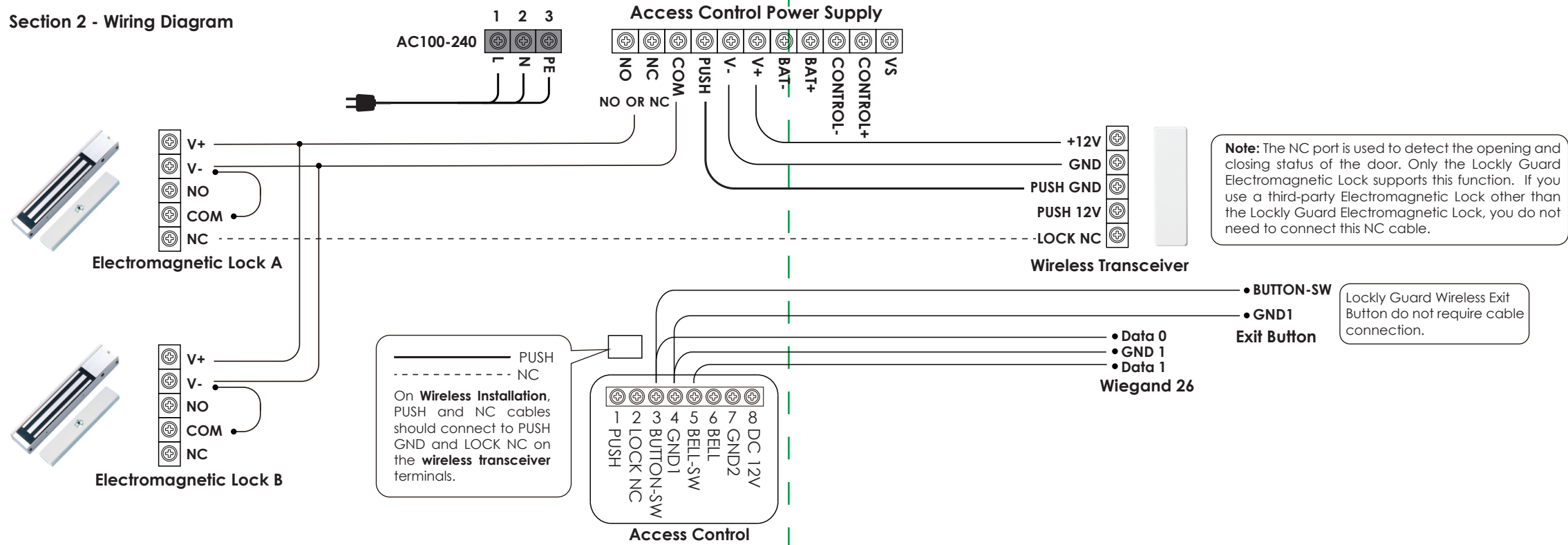
WWW.LOCKLYPRO.COM
PGI303

Section 1 - Product Highlights



1	PUSH	Lock Control Port	 To ensure the device works properly, please make sure the wires are connected according to this diagram.	
2	LOCKLY NC	Door Open Detection Port		
3	BUTTON-SW	Door Exit Button Port +	Wiegand 26 Data 0	
4	GND1	Door Exit Button Port -	Doorbell Button Port	Wiegand 26 GND 1
5	BELL-SW	Doorbell Button Port +	Wiegand 26 Data 1	
6	BELL	Doorbell Signal Port		
7	GND2	Access Control Power -	Doorbell Power -	
8	DC12V	Access Control Power +	Doorbell Power +	
9				

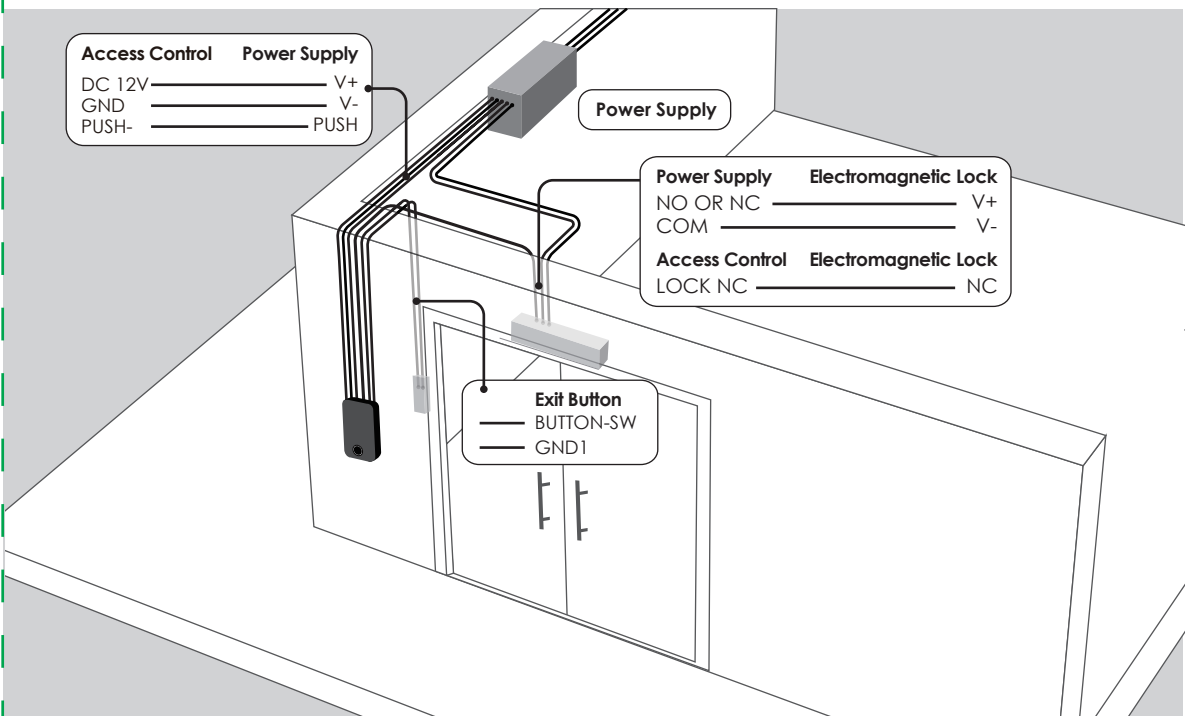
Section 2 - Wiring Diagram



Note: The NC port is used to detect the opening and closing status of the door. Only the Lockly Guard Electromagnetic Lock supports this function. If you use a third-party Electromagnetic Lock other than the Lockly Guard Electromagnetic Lock, you do not need to connect this NC cable.

Lockly Guard Wireless Exit Button do not require cable connection.

Section 3 - Wired Installation Diagram



FOR COMMERCIAL USE & PROFESSIONAL INSTALLATION



We're here to help!
prosales@lockly.com
locklypro.com/support

© Copyright 2022 Lockly All rights reserved

USA Patent NO. US 9,881,146 B2 | USA Patent NO. US 9,853,815 B2 | USA Patent NO. US 9,875,350 B2 | USA Patent NO. US 9,665,706 B2 | USA Patent NO. US 11,010,463 B2 | AU Patent NO. 2013403169 | AU Patent NO. 2014391959 | AU Patent NO. 2016412123 | UK Patent NO. EP3059689B1 | UK Patent NO. EP3176722B1 | Other Patents Pending

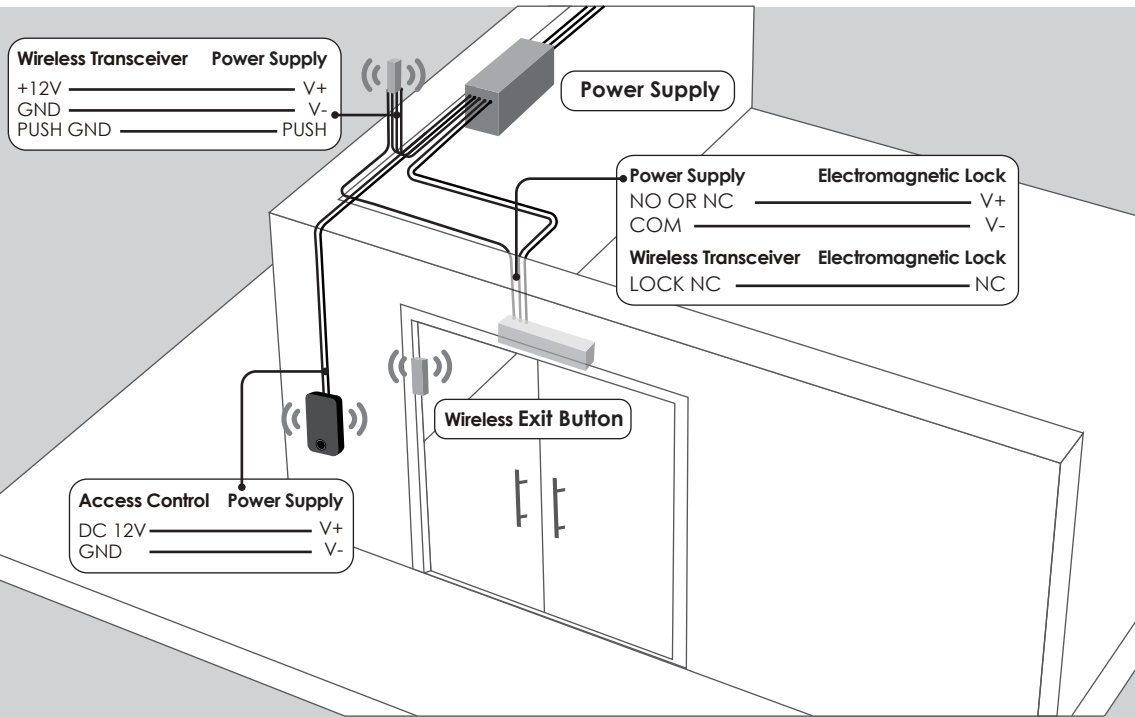
The Bluetooth® word mark and logos are registered trademarks owned by the Bluetooth SIG, Inc., and any use of such marks by Lockly is under license. Other trademarks and trade names are those of their respective owners. Google, Android and Google Play are trademarks of Google LLC.

IMPGI30320220609

DISCLAIMER

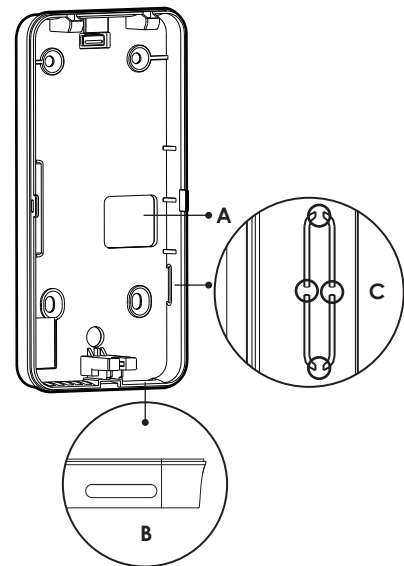
Lockly has made every effort at the time of publication to ensure the accuracy of the information provided herein, product specifications, configurations, system, components and options availability are all subject to change without notice to improve features, reliability or design or otherwise. For more information, please visit: www.locklypro.com

Section 4 - Wireless Installation Diagram

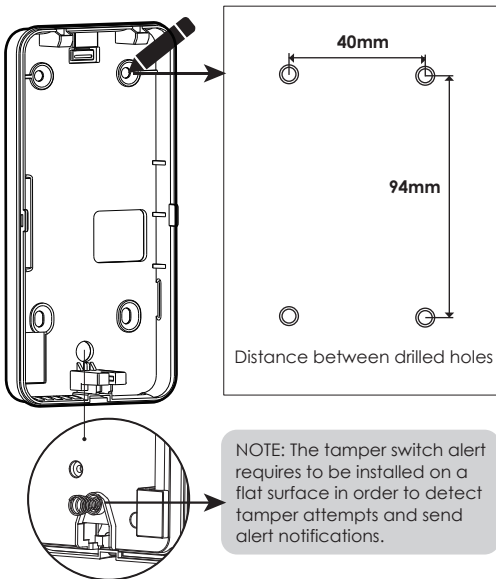


Section 5 - Installing the Mounting Plate

1. The mounting plate has 3 wire/cable outlets. If you need to use the side outlet (C), remove the hole cover before mounting.

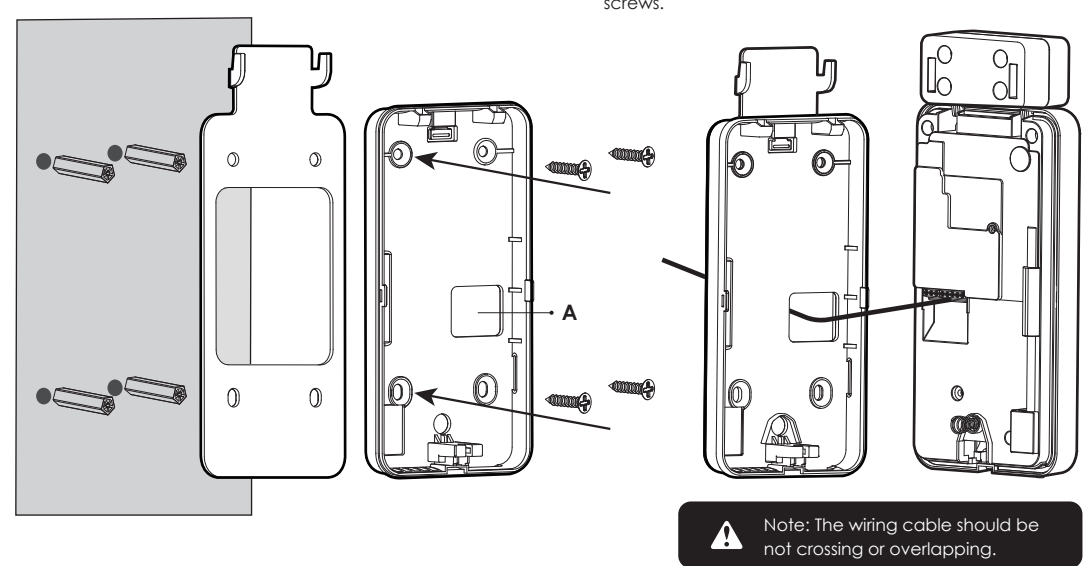


2. Position the mounting plate on a flat surface or wall as to where it will be installed. Mark the 4 holes with a pencil. Drill holes with 6mm (diameter) and 30mm depth.



Section 5 - Installing the Mounting Plate (cont...)

3. Insert the plastic wall plugs on the drilled holes.



Section 6 - Installing Ingress Vision Smart Access Control + Video Camera

1. Align the Ingress Vision device from the top of the mounting plate then insert till it reaches the bottom of the plate. Ensure the device and video camera are completely tucked.

2. Secure the device with a screw at the bottom.

