



Enjoy the freedom™

This Month in Total Access Solutions



Preparing a Multifamily Property for New Rental Tenants.

There is a new generation of renters with new expectations. Simply providing a few treadmills, a bike storage area, or an ADSL hookup isn't going to make your multifamily property stand out from the crowd in 2023.

[Read more](#)



Virtual leasing—how does it work and why is it popular?

Leasing agencies are increasingly moving towards virtual leasing, which began due to COVID restrictions. This practice has grown in popularity despite no longer being driven by health concerns.

[Read more](#)

INDUSTRY SHOW RECAP



Showcasing Innovative Products at NAHB IBS.

NAHB IBS 2023, held by the National Association of Home Builders, was a four-day event where LocklyPRO featured a variety of Lockly GUARD door hardware products and cloud management solutions. Security professionals got the chance to get hands-on with commercial door and entry solutions designed for property managers, homebuilders, contractors, and residential/multifamily communities.

It was great meeting and networking with everyone to help educate and support the housing industry.



Come learn about Lockly GUARD™ products.
Join Us at Hans Johnsen Company.

We were excited to participate in the Hans Johnsen Company Security Hardware Trade Show in Texas! Industry pros learned about Lockly GUARD™ smart entry hardware products through our product training sessions and hands-on demonstrations.

UPCOMING



See you this March in Las Vegas for iSC West

Visit us at this year's International Security Conference (*ISC*), March 28 - 31 in *Las Vegas* at the Venetian Expo. We will be featuring our Total Access Solutions including our professional and commercial-grade Lockly Guard entry access hardware and LocklyOS, an all-in-one dashboard that allows users to view, manage, and control where, when, and by whom any Lockly smart lock is being used, from anywhere in the world.

Stop by booth #W2274 at the Venetian Expo, Las Vegas, and say hi.

[Learn more](#)

FEATURED PRO PRODUCTS



A smart lock solution that is perfect for thin-framed doors.

Introducing Lockly Guard Athena (228SW).

Provides primary entrance lever access and security for thin-framed metal, aluminum, or wooden swinging doors. Works with Lockly Access Portal and Commercial app for managing multiple entry points across multiple properties.

For orders or more information contact us: prosales@lockly.com

[Learn more](#)

Access for glass
framed sliding
and swinging
entry-exit doors



Introducing Lockly Guard Defender Lever Edition (238L).

Ideal for storefront framed entry and exit doors, providing main entrance level access and security innovation beyond the front door. Works with Lockly Access Portal and Commercial app for managing multiple entry points across multiple properties.

For orders or more information contact us: prosales@lockly.com

[Learn more](#)



Whether 10 or 1,000 doors, we have a commercial-grade access solution.

Commercial-grade integrated hardware and software solutions secure what matters most, working together seamlessly from the ground up.

[Learn more](#)

Take advantage of the latest rebate offers on our hot selling SKU's.



Get up to a 6.8% rebate on our best-selling Lockly Guard smart locks, entry access devices, and smart accessories.

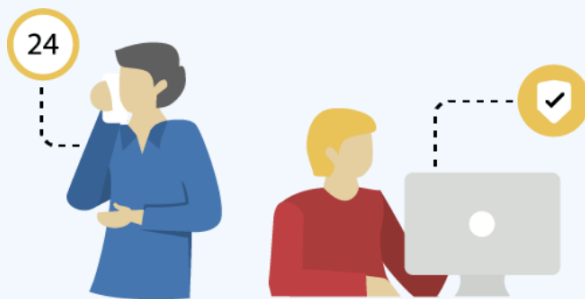
[Learn more](#)

More Recent Blog Post

Lockly Pro | Blog Articles

- [5 Door Security Risks Faced By Office IT Managers →](#)
- [Access Control Requirements At Different Stages Of Construction →](#)
- [Corporate relocation Trends Driving Multifamily Property Growth →](#)
- [5 Tech Solutions For Challenges Facing MFU Property Managers →](#)
- [Multifamily Apartment Policy Changes in 2022 →](#)

[Read more](#)



Count on pro support before, during, and after.

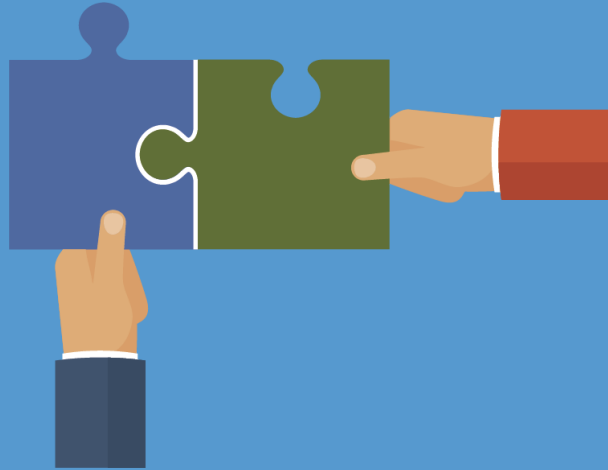
The LocklyPRO team brings together a unique set of backgrounds, experiences, and ideas focused on property access, control, and management. Please get in touch and one of our experts will answer all your questions.

[Contact us](#)

Partner with us

LOCKLY offers a diverse product range, pricing, and service programs to grow your business. Apply to become a master distributor today.

[Contact us](#)



LOCKLY PRO

[PRO PRODUCTS](#) [CONTACT US](#)



You may unsubscribe from these emails at any time here: [Unsubscribe](#).

As always, we welcome your comments and feedback at prosales@lockly.com

LOCKLY 676 Transfer Rd., St. Paul, MN 55114